

# PDS / CAS

LEVEL 9  
ready

PROXIMITY DETECTION SYSTEM /  
COLLISION AVOIDANCE SYSTEM

Articulated Dump Trucks



**BELL**

# Proximity Detection System (PDS) / Collision Avoidance System (CAS)

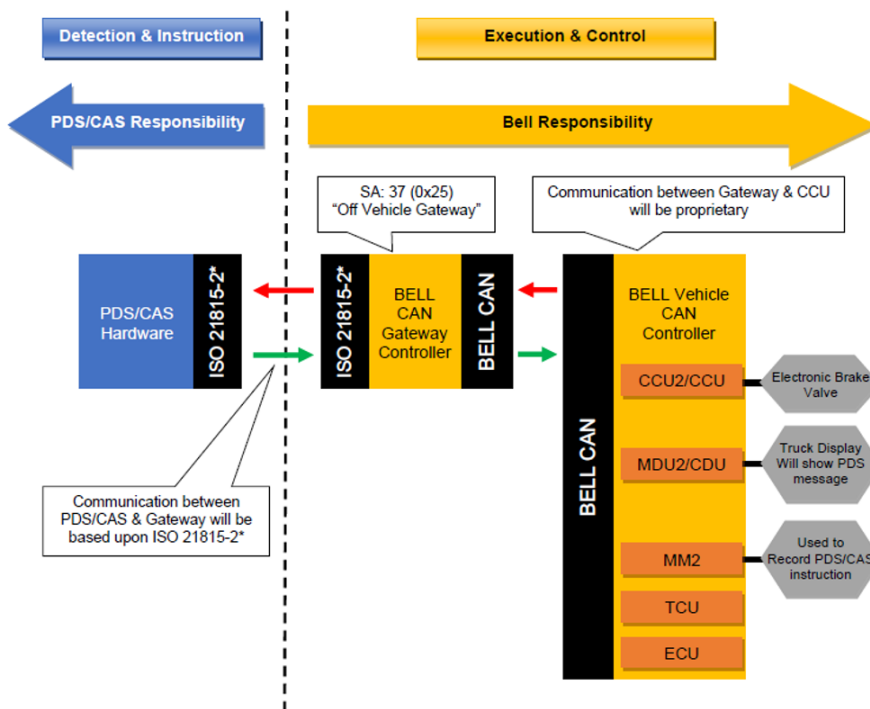
All Bell E-series ADTs are now Pedestrian detection system PDS / Collision avoidance systems CAS level 9 ready.

Proximity detection systems (PDS) improve the operator's awareness by detecting potential collision threats and warning the operator visually and audibly, whereas collision avoidance systems intervene with a vehicle by either slowing it down or stopping it to prevent, or at least reduce the severity of collisions between equipped vehicles and equipped pedestrians.



## Areas of responsibilities

BELL Provides a gateway controller (ISO 21815-2) for third party PDS to connect to the machine. Bell Executes the messages from third party PDS. Third party provides PDS/CAS hardware and connect to the machine via Bell gateway controller. This hardware detects and give instructions.



### PDS Gateway Controller

Machines that can be fitted with PDS Controller:

- D# MK4 to D# MK7.
- E# PIN 1.0 to PIN 3.0



### Electronic Brake Valve (EBV)

Required for: D# MK4 to D# MK7.5 (Not required for B60D)

Required for: E# Small Pin 1.0 to PIN 2.1

Required for:

- E# B18E, B25E
- PIN 3.0 onwards

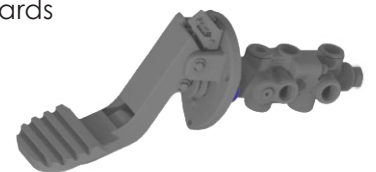


### Brake Pedal

(same as EBV)

Required for: E# B18E to B25E

PIN 3.0 onwards



All dimensions are shown in millimetres, unless otherwise stated between brackets. Under our policy of continuous improvement, we reserve the right to change technical data and design without prior notice. Photographs featured in this brochure may include optional equipment. Available in E-series only.

**BELL INTERNATIONAL: Tel: +27 (0)35-907 9431**

**E-mail: [marketing@bellequipment.com](mailto:marketing@bellequipment.com)**

**Web: [www.bellequipment.com](http://www.bellequipment.com)**

Tel: +61 (0)8-9355-2442

Tel: +27 (0)11-928-9700

Tel: +33 (0)5-55-89-23-56

Tel: +44 (0)1283-712862

Tel: +49 (0)6631 / 91-13-0

Tel: +1 (704) 655 2802

**Strong Reliable Machines  
Strong Reliable Support**

