



Engine

Model	HINO J08E
Type	Direct injection, water-cooled, 4-cycle, 6-cylinder diesel engine with intercooler turbo-charger
No. of cylinders	6
Bore and stroke	112 mm x 130 mm
Displacement	7.684 L
Rated power output	173 kW/2,100 min ⁻¹ (ISO 9249)
	185 kW/2,100 min ⁻¹ (ISO 14396)
Max. torque	966 N•m/1,600 min ⁻¹ (ISO 9249)
	998 N•m/1,600 min ⁻¹ (ISO 14396)



Hydraulic System

Pump	
Type	Two variable displacement pumps + 1 gear pump
Max. discharge flow	2 x 245 L/min, 1 x 21 L/min
Relief valve setting	
Boom, arm and bucket	34.3 MPa {350 kgf/cm ² }
Power Boost	37.8 MPa {385 kgf/cm ² }
Travel circuit	34.3 MPa {350 kgf/cm ² }
Swing circuit	29.0 MPa {296 kgf/cm ² }
Control circuit	5.0 MPa {50 kgf/cm ² }
Pilot control pump	Gear type
Main control valves	8-spool
Oil cooler	Air cooled type



Swing System

Swing motor	Axial-piston motor
Brake	Hydraulic; locking automatically when the swing control lever is in neutral position
Parking brake	Oil disc brake, hydraulic operated automatically
Swing speed	10.3 min ⁻¹ {rpm}
Tail swing radius	3,300 mm
Min. front swing radius	4,420 mm



Attachments

Backhoe bucket and arm combination

Type	Backhoe bucket						
	Normal digging						
Bucket capacity	Heaped (ISO7451)	m ³	1.2	1.2HD	1.40	1.4HD	1.7HD
	Struck (ISO7451)	m ³	0.84	0.88	0.96	1	1.3
Opening width	With side cutters	mm	1,490	1,300	1,680	1,460	1,460
	Without side cutters	mm	1,400	1,180	1,580	1,340	1,410
No. of teeth			5	4	5	5	5
Bucket weight		kg	1,050	1,270	1,140	1,410	1,520
Combinations	2.40 m short arm		○	○	○	○	◎
	3.10 m standard arm		○	○	○	○	

◎ Standard ○ Recommend



Travel System

Travel motors	2 x axial-piston, two-step motors
Travel brakes	Hydraulic
Parking brakes	Oil disc brake per motor
Travel shoes	50 each side
Travel speed	5.2/3.1 km/h
Drawbar pulling force	280 kN (ISO 7464)
Gradeability	70 % {35°}



Cab & Control

Cab

All-weather, sound-suppressed steel cab mounted on the high suspension mounts filled with silicone oil and equipped with a heavy, insulated floor mat.

Control

Two hand levers and two foot pedals for travel

Two hand levers for excavating and swing

Electric rotary-type engine throttle



Boom, Arm & Bucket

Boom cylinders	140 mm x 1,305 mm
Arm cylinder	150 mm x 1,675 mm
Bucket cylinder	130 mm x 1,208 mm



Refilling Capacities & Lubrications

Fuel tank	503 L
Cooling system	35 L
Engine oil	28.5 L
Travel reduction gear	2 x 8.0 L
Swing reduction gear	7.0 L
Hydraulic oil tank	245 L tank oil level
	410 L hydraulic system



Working Ranges

Unit: m

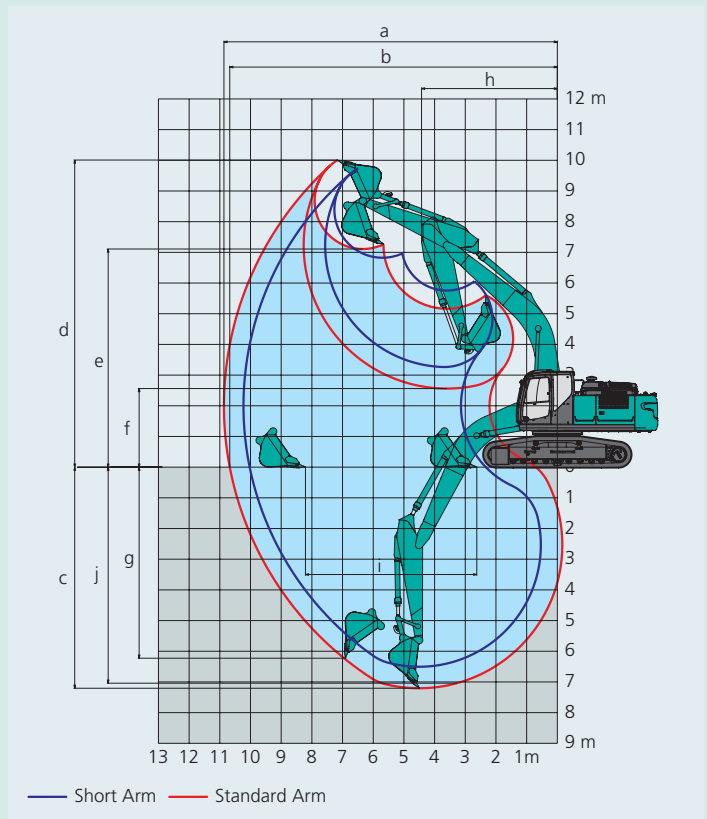
Boom		6.20m	
Arm		Short 2.4 m	Standard 3.1 m
Range			
a- Max. digging reach		10.23	10.87
b- Max. digging reach at ground level		10.03	10.68
c- Max. digging depth		6.50	7.20
d- Max. digging height		9.74	10.01
e- Max. dumping clearance		6.83	7.11
f- Min. dumping clearance		3.26	2.56
g- Max. vertical wall digging depth		5.65	6.23
h- Min. swing radius		4.4	4.42
i- Horizontal digging stroke at ground level		4.0	5.58
j- Digging depth for 2.4 m (8') flat bottom		6.31	7.04
Bucket capacity ISO heaped m ³		1.4	1.4

Digging Force (ISO 6015)

Unit: kN

Arm length	Short 2.4 m	Standard 3.1 m
Bucket digging force	188 208*	188 208*
Arm crowding force	158 174*	126 139*

*Power Boost engaged.



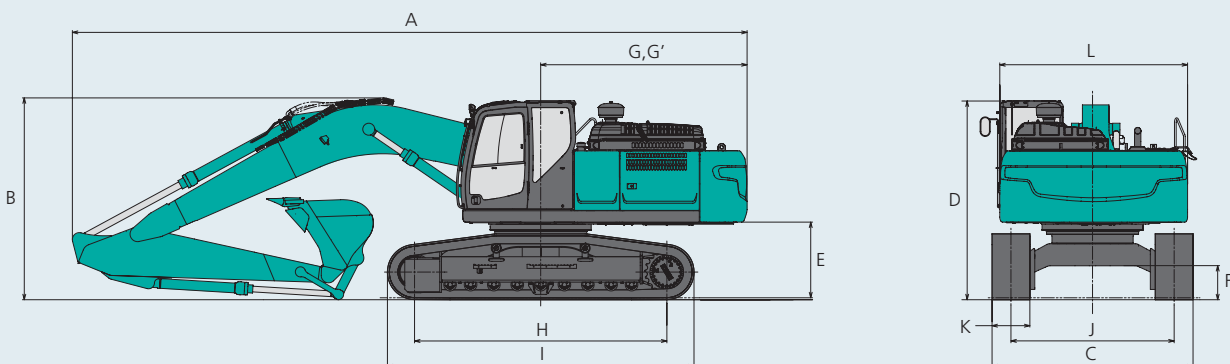
Dimensions

Unit: mm

Arm length	Short 2.4 m	Standard 3.1 m
A Overall length	10,830	10,710
B Overall height (to top of boom)	3,460	3,200
C Overall width		3,190
D Overall height (to top of cab)		3,160
E Ground clearance of rear end*		1,200
F Ground clearance*		510

G Tail swing radius	3,300
G' Distance from center of swing to rear end	3,270
H Tumbler distance	4,000
I Overall length of crawler	4,870
J Track gauge	2,590
K Shoe width	600
L Overall width of upperstructure	2,980

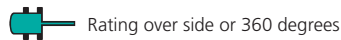
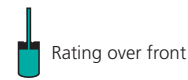
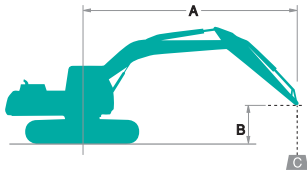
*Without including height of shoe



Operating Weight & Ground Pressure

In standard trim, with standard boom, 3.1 m arm, and 1.4 m³ ISO heaped bucket

Type	Triple grouser shoes (even height)			
Shoe width	mm	600	700	800
Overall width	mm	3,190	3,290	3,390
Ground pressure	kPa (kgf/cm ²)	58 (0.59)	51 (0.52)	45 (0.46)
Operating weight	kg	30,600	31,200	31,700



A: Reach from swing centerline to arm top
 B: Arm top height above/below ground
 C: Lifting capacities in Kilograms
 Bucket: Without bucket
 Relief valve setting: 34.3 MPa (350 kgf/cm²)

SK300LC		Boom: 6.2 m Arm: 3.1 m, Bucket: without Shoe: 600 mm																				
		1.5 m		3.0 m		4.5 m		6.0 m		7.5 m		9.0 m		At Max. Reach		Radius						
A		Rating over front		Rating over side or 360 degrees		Rating over front		Rating over side or 360 degrees		Rating over front		Rating over side or 360 degrees		Rating over front		Rating over side or 360 degrees						
B		Rating over front		Rating over side or 360 degrees		Rating over front		Rating over side or 360 degrees		Rating over front		Rating over side or 360 degrees		Rating over front		Rating over side or 360 degrees						
7.5 m	kg															*3,830	*3,830	7.45 m				
6.0 m	kg									*5,590	*5,590					*3,630	*3,630	8.37 m				
4.5 m	kg									*6,640	*6,640	*6,020	5,730			*3,590	*3,590	8.95 m				
3.0 m	kg									*10,790	*10,790	*7,950	7,610	*6,700	5,480	*5,650	4,140	*3,680	*3,680	9.24 m		
1.5 m	kg									*13,110	10,700	*9,220	7,170	*7,400	5,250	6,420	4,030	*3,890	3,850	9.28 m		
G.L.	kg									*14,220	10,340	*10,110	6,890	*7,960	5,080	*5,090	3,960	*4,280	3,920	9.06 m		
-1.5 m	kg									*10,530	*10,530	*14,370	10,270	*10,480	6,770	8,160	5,010			*4,960	4,210	8.57 m
-3.0 m	kg	*12,310	*12,310	*16,580	*16,580	*13,750	10,380	*10,220	6,810	*7,850	5,070							*6,240	4,860	7.76 m		
-4.5 m	kg			*17,020	*17,020	*12,080	10,690	*8,870	7,050									*7,840	6,370	6.50 m		

SK300LC		Boom: 6.2 m Arm: 2.4 m, Bucket: without Shoe: 600 mm																					
		3.0 m		4.5 m		6.0 m		7.5 m		At Max. Reach		Radius											
A		Rating over front		Rating over side or 360 degrees		Rating over front		Rating over side or 360 degrees		Rating over front		Rating over side or 360 degrees											
B		Rating over front		Rating over side or 360 degrees		Rating over front		Rating over side or 360 degrees		Rating over front		Rating over side or 360 degrees											
7.5 m	kg																						
6.0 m	kg																						
4.5 m	kg																						
3.0 m	kg																						
1.5 m	kg																						
G.L.	kg																						
-1.5 m	kg																						
-3.0 m	kg																						
-4.5 m	kg																						

- Notes:**
- Do not attempt to lift or hold any load that is greater than these lift capacities at their specified lift point radius and heights. Weight of all accessories must be deducted from the above lift capacities.
 - Lift capacities are based on machine standing on level, firm, and uniform ground. User must make allowance for job conditions such as soft or uneven ground, out of level conditions, side loads, sudden stopping of loads, hazardous conditions, experience of personnel, etc.
 - Arm top defined as lift point.
 - The above lifting capacities are in compliance with ISO 10567. They do not exceed 87% of hydraulic lifting capacity or 75% of tipping load. Lifting capacities marked with an asterisk (*) are limited by hydraulic capacity rather than tipping load.
 - Operator should be fully acquainted with the Operator's and Maintenance Instructions before operating this machine. Rules for safe operation of equipment should be adhered to at all times.
 - Lift capacities apply to only machine as originally manufactured and normally equipped by KOBELCO CONSTRUCTION MACHINERY CO., LTD.

STANDARD EQUIPMENT

- | | | |
|--|---|---|
| <p>ENGINE</p> <ul style="list-style-type: none"> ENGINE, HINO J08E, diesel engine with turbocharger intercooler Automatic engine deceleration Auto Idle Stop (AIS) Batteries (2 x 12V - 96Ah) Starting motor (24V - 5 kW), 50 amp alternator Automatic engine shut-down for low engine oil pressure Engine oil pan drain cock Double element air cleaner <p>CONTROL</p> <ul style="list-style-type: none"> Working mode selector (H-mode, S-mode and ECO-mode) Power Boost | <p>SWING SYSTEM & TRAVEL SYSTEM</p> <ul style="list-style-type: none"> Swing rebound prevention system Straight propel system Two-speed travel with automatic shift down Sealed & lubricated track links Grease-type track adjusters Automatic swing brake <p>HYDRAULIC</p> <ul style="list-style-type: none"> Arm interflow system Auto warm up system Boom regeneration system Aluminum hydraulic oil cooler Hydraulic fluid filter clog detector N&B piping <p>MIRRORS, LIGHTS & CAMERA</p> <ul style="list-style-type: none"> Two rear view mirrors Five front working lights (Two for boom, two for cab, one for storage box) | <p>CAB & CONTROL</p> <ul style="list-style-type: none"> Two control levers, pilot-operated Tow eyes Horn, electric Cab light (interior) Luggage tray Large cup holder Detachable two-piece floor mat Headrest Handrails Intermittent windshield wiper with double-spray washer Skylight Tinted safety glass Pull-up type front window and removable lower front window Easy-to-read multi-display color monitor Automatic air conditioner Emergency escape hammer Suspension seat Remote machine monitoring system Travel alarm |
|--|---|---|

OPTIONAL EQUIPMENT

- | | | | |
|---|--|---|---|
| <ul style="list-style-type: none"> 2.4m short arm Wide range of shoes | <ul style="list-style-type: none"> Additional track guide Refueling pump | <ul style="list-style-type: none"> Cab guard Rear view camera | <ul style="list-style-type: none"> Lower under cover |
|---|--|---|---|

Note: Standard and optional equipment may vary. Consult your KOBELCO dealer for specifics.

Note: This catalog may contain attachments and optional equipment that are not available in your area. And it may contain photographs of machines with specifications that differ from those of machines sold in your areas. Please consult your nearest KOBELCO distributor for those items you require. Due to our policy of continuous product improvements all designs and specifications are subject to change without advance notice. Copyright by KOBELCO CONSTRUCTION MACHINERY CO., LTD. No part of this catalog may be reproduced in any manner without notice.

KOBELCO CONSTRUCTION MACHINERY CO., LTD.
 5-15, Kitashinagawa 5-chome, Shinagawa-ku, Tokyo 141-8626 JAPAN
 Tel: +81 (0) 3-5789-2146 Fax: +81 (0) 3-5789-2135
<https://www.kobelcocm-global.com>

Inquiries to: BELL INTERNATIONAL - Tel: +27 (0)35-907 9431
 E-mail: marketing@bellequipment.com - Web: www.bellequipment.com

**Strong Reliable Machines
 Strong Reliable Support**