

JCB 81



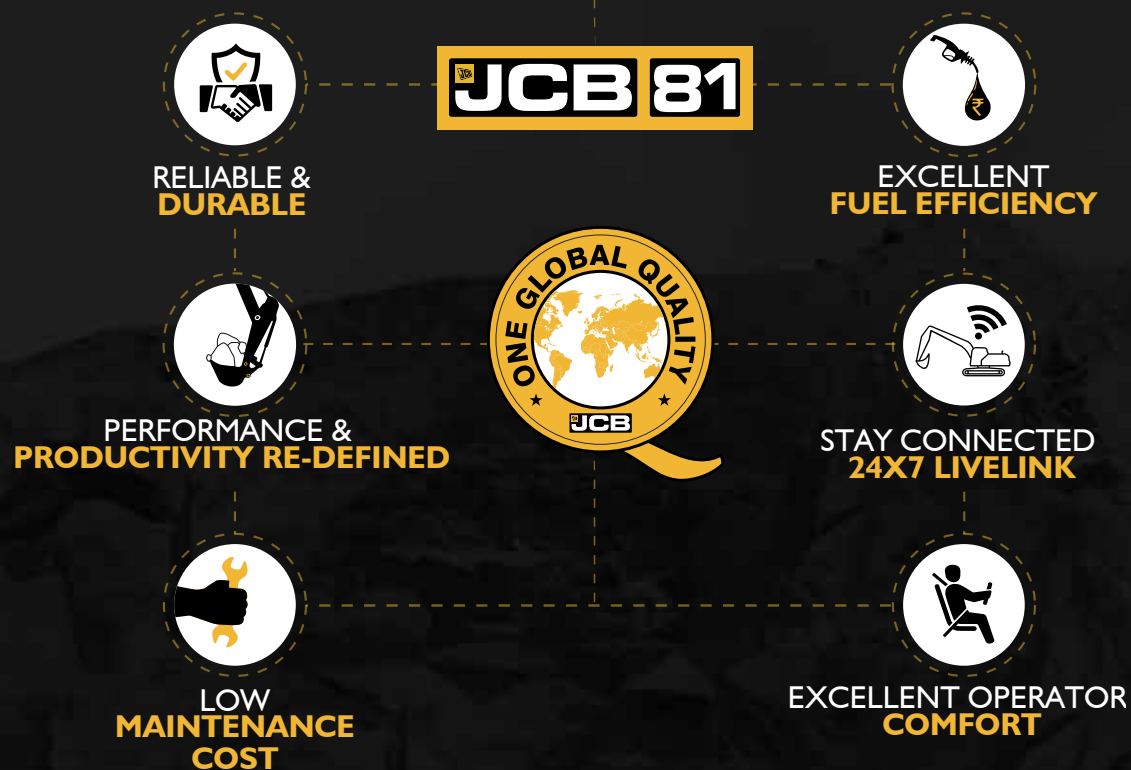
## HIGH ON PERFORMANCE, HIGH ON SAVINGS.

Engine Power : 76 hp (57 kW) | Bucket Capacity : 0.24 - 0.32 cu.m | Operating Weight: 8050 kg



## The New JCB 8I Excavator.

The NEW **JCB 8I** is engineered for performance and savings. It delivers high fuel efficiency with operational modes for productivity and economy. The robust design with high-quality aggregates assure the reliability and durability of this machine. The advanced telematics technology JCB LiveLink. now, helps you stay connected with your machine. The alerts and reminders increase your machine's uptime. This is the NEW **JCB 8I** machine with an optimised operating weight that delivers fuel efficiency, excellent operator comfort, 24x7 connectivity for high success and performance.



## RELIABLE AND DURABLE

Rugged upper frame provides durability in tough conditions.



X-type construction of lower frame is for higher strength.



Reinforced boom : Sturdy construction with 3 box sections, strengthened boom base and boom top area.



Strengthened arm : Reinforced boom end joint, bucket mounting area & top plate for higher durability.



IP69 dust & waterproof connectors for electrical harness, for high reliability of electrical system.



Proven hydraulic components and filtration system for longer life



# PERFORMANCE & PRODUCTIVITY REDEFINED

JCB 81 OFFERS YOU CLASS LEADING PRODUCTIVITY.

Excellent bucket and dipper tear-out force results in high output in hard strata.



Travel speed: JCB 81 is equipped with twin travel speeds for varying jobs.



## Tear-out Forces

Bucket  
5755 kgf

Dipper  
4134 kgf



# EXCELLENT FUEL EFFICIENCY

OFFERS EXCELLENT FUEL EFFICIENCY TO REDUCE YOUR FUEL COST.

New JCB 81 offers excellent fuel economy with a 10%\* reduction in fuel consumption.



Auto idler for fuel saving, when machine is not at work.

Choice of

**Productivity (P) & Economy (E) modes :**

**E :** Economy mode - For fuel saving with optimum productivity.

**P :** Productivity mode- Increased productivity through pump flow when higher output is required.



\*T&C Apply.

# LOW MAINTENANCE COST

NOW MAINTENANCE HAS BECOME EASIER  
AND FASTER WITH THE NEW JCB 81.

Class-leading maintenance interval

Service intervals on bucket operation	
Engine oil, oil filter and fuel filters	Every <b>500</b> hours
Hydraulic main filter	Every <b>1,000</b> hours
Hydraulic oil	Every <b>5,000</b> hours

Hydraulic oil  
change interval  
Every **5000** hours

Special filtration system extends hydraulic oil life up to 5000 hrs, which reduces the overall maintenance costs.



Radial seal-type air filter elements provide secure and error-free sealing. Filter elements are covered with wire mesh to avoid damage to filter paper during storage, handling and cleaning.



JCB 81 is equipped with robust filtration system having 3 nos. fuel filters and 1 no. water separator for high life of fuel injection system.

ULTIMATE EASE OF

## SERVICEABILITY



Compact and the easy-to-handle bonnet is assisted by a gas strut that helps in easy opening and closing. It makes periodic maintenance easy and effortless.

Easy to access periodic checkpoints.

Side by side radiator & cooler for ease of maintenance.

Wire mesh provided to avoid clogging of radiator & oil cooler.

Fuses & relays are located inside the cabin and are easy to access.

Closed type grease bath system for slew gear.



Remote-mounted engine oil filter to allow easy access.

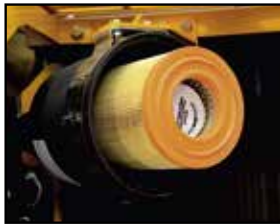
# YOUR SAFETY OUR PRIORITY

JCB 8I OFFERS SAFE WORKING ENVIRONMENT.

## Equipment safety system:

Audio-visual alerts provided in instrument panel for the following purpose :

### Air-filter blockage



### Low coolant level



## Machine safety:

Servo isolator lever, over-ride system & swing-lock system provide additional safety against unintended machine operations.



## Damage protection:

Belly guard at lower frame & undercovers for upper frame.



## High visibility:

Single right-hand glass and low bonnet height for high visibility leads to safe operation.



## Electrical safety:

Battery cover provided.



# STAY CONNECTED 24X7

NOW BE ASSURED OF YOUR JCB EXCAVATOR'S SERVICE, OPERATION AND SECURITY WITH THE ADVANCED TELEMATICS SYSTEM CALLED LIVELINK.



## Security



Alerts in case the machine is used outside the set hours



Geofencing alerts

## Reports & alerts



Customised reports on machine performance



Easier fleet management



Periodic reports

## Safety



Critical health alerts

## Operation & performance monitoring



Idle time monitoring



Working hour monitoring

## Proactive maintenance & usage

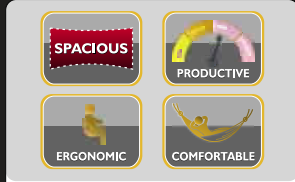


Maintenance reminders



# EXCELLENT OPERATOR COMFORT

A COMFORTABLE OPERATOR IS A PRODUCTIVE OPERATOR



Large cab with pressed steel construction offers increased internal space and enhanced overall visibility.



AC available as an option.



Clear display of warning & operating modes.



High visibility for working at different heights through glass provided in front of the cab.



Easy to open roof hatch assisted helps to keep the cab well ventilated.



Cabin is mounted on six viscous mounts to absorb vibrations.



Rubber coated track pedal and foot rests for operator comfort. Front lower glass can be removed for ventilation.

# EXTENDED CARE

GIVE YOUR MACHINE EXTENDED WARRANTY AND CARE.

- JCB Careplus is an extended warranty programme that comes into effect after the machine standard warranty expires.
- JCB Careplus can be purchased within the 1<sup>st</sup> year from the sale of the machine.
- The programme offers you peace of mind and saves your maintenance cost even after your machine standard warranty expires.



Extended Warranty Programme

## BENEFITS OF JCB CAREPLUS



No limits on number of claims



Preventive maintenance service\*



Nationwide coverage\*



JCB skilled manpower support



Maximum productivity



Maximum uptime



Maximum performance

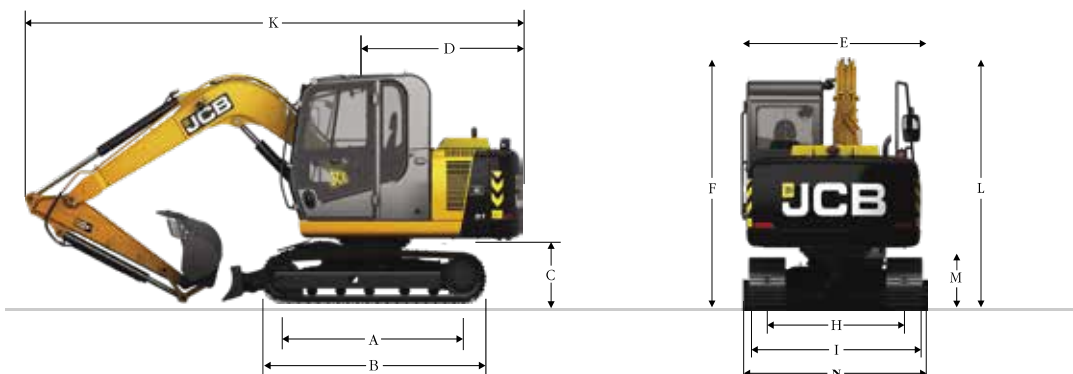


Breakdown cost protection



Better resale value

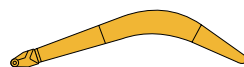
\*T&C Apply



### STATIC DIMENSIONS

	Track Shoe Width	450 mm	600 mm
A	Track length on ground	2.24 m	2.24 m
B	Undercarriage overall length	2.84 m	2.84 m
H	Track gauge	1.70 m	1.70 m
I	Width over tracks	2.15 m	2.30 m
K	Transport with mono boom and 2.4 m dipper*	6.23 m	6.23 m
L	Transport height with mono boom and 2.4 m dipper*	2.77 m	2.77 m
C	Counterweight clearance	775 mm	775 mm
D	Tail swing radius	1.84 m	1.84 m
E	Width of superstructure*	2.22 m	2.22 m
F	Height over cab	2.72 m	2.72 m
N	Dozer blade width (back fill)	2.30 m	2.30 m
G	Ground clearance	365 mm	365 mm
M	Track height	660 mm	660 mm
Dozer blade (optional)			
	Max height (above ground)	366 mm	366 mm
	Dig depth ( below ground)	243 mm	243 mm
	Approach angle	26°	26°
	Width	2.30 m	2.30 m
	Height	397 mm	397 mm
	Reach in front of tracks	480 mm	480 mm

### WORKING RANGE: JCB 81



<b>Boom length:</b>		<b>3.7 m</b>
<b>Dipper length:</b>		<b>1.74 m ( Standard)</b>
Maximum digging reach	m	6.45
Maximum digging reach (on ground)	m	6.32
Maximum digging depth	m	4.08
Maximum digging height	m	7.1
Maximum dumping height	m	5.40
Maximum vertical wall-cut depth	m	3.68
Minimum swing radius	m	1.84
Dipper tear-out	kgf	4.13
Bucket tear out - all machines	kgf	5.76
Bucket rotation	deg.	184°

### ENGINE

Model	Kirloskar 4R 1040 NA
Gross power	76 hp at 2200 RPM (SAEJ 1995)
Alternator	85A

### TRACK DRIVE

Gradeability	: 70% (35 deg.) continuous
Travel Speed	: High - 5.1 km/hr; Low - 3.1 km/hr
Tractive efforts	: 55.1 kN (5600 kgf)

### UNDERCARRIAGE

Track type	: Sealed and greased
Track adjustment	: Grease cylinder type.
Track idler	: Sealed and lubricated, with spring enhanced recoil.
Track shoe	: 450 mm / 600 mm
Rollers and shoes (each side)	
Upper rollers	: 1
Lower rollers	: 5
Track shoes	: 39

### SERVICE CAPACITIES

Fuel tank	164 L
Engine coolant	23 L
Engine oil	14 L
Track reduction gear (each side)	1.7 L
Hydraulic system	92 L
Hydraulic tank	55 L
Hydraulic tank	73.0 L

### HYDRAULIC SYSTEM

#### Power modes

#### Pumps

Main pumps	: Variable displacement axial piston type.
Maximum flow	: 2 x 70.3 lpm (main).
Servo pump	: Gear type maximum flow.
Dozer	: Gear type, maximum flow 21.5 lpm

#### Control valve

#### Relief valve settings

Boom / Arm / Bucket	: 284 bar
Swing circuit	: 225 bar
Travel circuit	: 284 bar

### FILTRATION SYSTEM

In-tank	: 105 microns, suction strainer.
Main return line	: 10 microns, fibre form element.
Pilot line	: 10 microns, paper element.
Hydraulic hammer (optional) return	: 10 microns reinforced microform element

### SWING SYSTEM

Swing motor	: Axial piston type.
Swing brake	: Hydraulic braking assisted by spring applied disc-type parking brake.
Final drive	: Planetary reduction.
Swing gear	: Large diameter, internally toothed fully sealed grease bath lubricated.
Swing speed	: 12.5 rpm

### EXCAVATOR BUCKET

Bucket size	Capacity	Weight
Max. width toe plate	Sae heaped	
800 mm	0.24 cu.m	318 kg
950 mm	0.32 cu.m	343 kg

### STANDARD EQUIPMENT


Dozer blade.  
FM radio.  
USB media player with speakers.  
Cab interior light.  
HSP pressure test points.  
Rock-breaker pipework mounting brackets.  
One work light each on boom & tool box.  
Upper structure under covers.  
Tool kit.  
Undercarriage belly guarding.  
0.32 cu.m general purpose bucket.  
Additional work lights on cab and counterweight.  
Laminated glass on front and right hand side of cabin.  
LiveLink.


### OPTIONAL EQUIPMENT

Ripper tooth  
0.24 cu.m bucket  
Rock-breaker (HM390)  
Rock-breaker circuit  
First aid kit  
Fire extinguisher  
Air-conditioned cabin  
Cab grill (front & top)  
Short boom & arm  
450mm / 600 mm track shoes



Towards Industry's finest customer support network

 **5,000+**  
Trained service engineers

 **18**  
Training centres

 **3,000+**  
Mobile service engineers

 **250+**  
Service vans

 **24x7 Support**  
12 Languages



 **60+**  
Dealers

 **700+**  
Outlets

 **5**  
Parts warehouses



Connect with us on  
JCB Support Face Book Page.

## EXTENSIVE PARTS SUPPORT

JCB genuine parts offer a comprehensive machine protection solution.



## JCB LOYALTY PROGRAMME



Instant membership card

Welcome kit

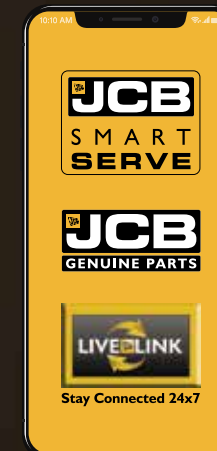
Reward points

Special programme features

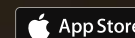
Extended benefits



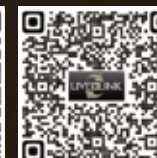
## SMART & DIGITAL SUPPORT



Download from:



LiveLink



Genuine Parts

Dealer's stamp:

**JCB INDIA LIMITED B-1/I-1, 2nd Floor, Mohan Co-operative Industrial Estate,  
Mathura Road, New Delhi - 110044.**  
For more information SMS "JCB" to **56767** or call our toll free no. **1800-1037-386**  
Phone: 011-40539745 Website: **www.jcb.com/en-in**

Follow us:      /JCBIndiaLtd

Disclaimer: The claims w.r.t. performance, fuel efficiency, reliability and productivity made herein are based on tests conducted in controlled environment against the outgoing JS 81 model. The results may vary depending upon various factors like operator's capability, test conditions. The actual machine/equipment may differ from the one reflected herein. T&C apply.

©2009 JCB Sales. All rights reserved. No part of this publication may be reproduced, stored in a retrieval system, or transmitted in any form or by any other means, electronic, mechanical, photocopying or otherwise, without prior permission from JCB Sales. All references in this publication to operating weights, sizes, capacities and other performance measurements are provided for guidance only and may vary dependant upon the exact specification of machine. They should not therefore be relied upon in relation to suitability for a particular application. Guidance and advice should always be sought from your JCB Dealer. JCB reserves the right to change specifications without notice. Illustrations and specifications shown may include optional equipment and accessories. The JCB logo is a registered trademark of J.C. Bamford Excavators Ltd.

The pictures used and facts given are graphic representations and approximate values. The actual color and numbers may vary.

