



JCB LOADALL | 530-70/530-110

Gross power: 56kW (75hp) Lift capacity: 3000kg Lift height: 7m – 11m







What is a **JCB Loadall**?

In 1977, JCB designed the world's first telescopic handler, transforming how we load, lift, place and move bulk material.

We've continued to refine the concept ever since, making our Loadalls genuine all-purpose machines that can move more material for less money in the quickest possible time.

Our world-leading telescopic handler range has now revolutionised material handling in agricultural and construction sectors, as well as industrial applications such as waste, mining and lumber. So if you're trying to choose the most productive machine on site and the best investment, there's really only one choice – a JCB Loadall.

A GREAT INVESTMENT.

TELESCOPIC HANDLERS ARE ONE OF THE WORLD'S FAVOURITE CONSTRUCTION AND AGRICULTURAL. THE COMBINATION OF FORWARD AND VERTICAL REACH SIMPLY CAN'T BE MATCHED BY ANY OTHER MACHINE. THIS MEANS YOU CAN PLACE MORE MATERIAL IN LESS SPACE IN LESS TIME WITH A JCB LOADALL.

The telescopic handler is 6 machines in 1; with a front shovel it can do the job of a wheel loader, skid steer and loader tractor, with an extending boom and variety of attachments, the JCB Loadall can also replace the work of a forklift, aerial work platform and mobile crane.

Save space.

- Lift capacity of 3000kg allows you to stack materials at height and maximise storage and site space
- Reach beyond obstacles for placement
- Manoeuvre in tight spaces with compact footprint and excellent turning circle.
- Compress material with downward pressure, allowing for more material per container/truck load

Save time.

- Load and unload more efficiently with one JCB Loadall versus multiple workers
- Move materials around site quicker and easier with a Loadall
- Reach and offload materials to multiple floors of a building in seconds



Save material costs.

- Reduce the need for re-handling material by doing all the handling you need first time round
- Handle material more accurately, reducing material damage
- Store materials more effectively

Save operation costs.

- Redeploy manpower; with a Loadall which is able to do the job of several workers
- Replace multiple machines like skid steers, wheel loaders and loader tractors with one Loadall



Unrivalled forward reach and lift height along with an industry leading compact design, the JCB Loadall range can take the place of a loader tractor, mobile crane, wheel loader, skid steer or industrial forklift.



A PROVEN CONCEPT.

JCB PIONEERED THE CONCEPT OF THE TELEHANDLER IN 1977. NOW THE WORLD NUMBER ONE SUPPLIER OF TELEHANDLERS, WE'VE REMAINED AT THE FOREFRONT OF DESIGN, PERFORMANCE AND INNOVATION PROVIDING THE CONSTRUCTION, AGRICULTURE AND INDUSTRIAL SECTORS WITH CLASS LEADING PRODUCTS.

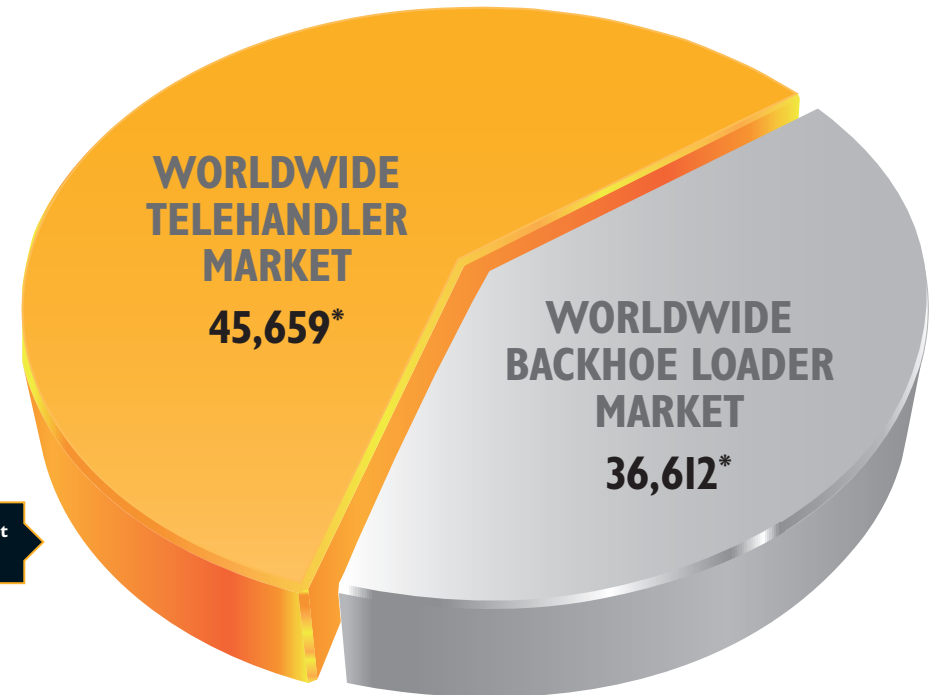
A worldwide favourite.

Now outselling the backhoe loader, the telescopic handler concept is a recognised favourite in construction, agriculture and industrial applications.

Since the sale of the first telehandler in 1977, JCB have constantly revolutionised material handling. The first for 4 wheel drive, JCB enabled customers to operate in areas of a building site or farm previous unreachable by 2 wheeled drive models.

By being the first and only to manufacture their own driveline, JCB ensures all components are perfectly matched for maximum performance.

Whatever the developments, the competitors have always followed.



The telescopic handler market has grown 115% since 2009.

*Excludes India.



In it's 40 year history, JCB have built and sold over 200,000 telescopic handlers, more than any other manufacturer.



STRENGTH AND DURABILITY.

IN ORDER TO MAKE JCB LOADALLS AS PRODUCTIVE AS POSSIBLE, WE MAKE SURE THEY'LL ENJOY A LONG SERVICE LIFE. EACH MACHINE IS BUILT USING THE BEST QUALITY COMPONENTS, AS WELL AS INNOVATIVE MANUFACTURING PROCESSES.

Tried and tested.

1 To make sure your machine is ready to work hard, JCB Loadalls undergo a stringent testing programme that includes prolonged high stress loading of the chassis, boom and other key components. We also carry out hot and cold climate testing and repeated transmission use over thousands of cycles.

Tough boom design.

2 For ultimate strength and durability, there's a large boom overlap of over 1m on every model. Hoses are routed through this boom structure for maximum protection.

The lift and displacement rams are centralised to keep load stresses evenly distributed. Lift, tilt and extension rams are held in place by keyhole castings for greater structural integrity.

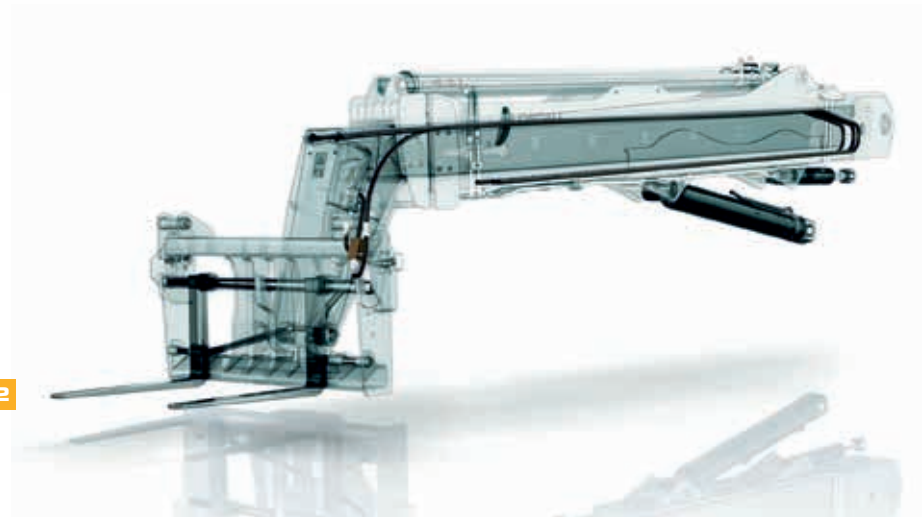


We've fitted a tough inverted U-shaped boom pressing with fully welded closing plates. For extra strength, we've reduced the number of joints and stress points across our integrated boom nose and one-piece closing plate.

The one-piece fully welded chassis maximizes strength and minimizes weight. For ultimate structural rigidity, the boom on a JCB Loadall is mounted low in the chassis. This also affords excellent visibility over the boom.



1



2



To ensure superior quality and productivity, we manufacture all chassis, booms, hydraulic cylinders, cabs, axles, transmissions and engines for the entire Loadall range.

These Loadalls use the same drivetrain (engine, transmission and axle) as the bestselling JCB 3DX backhoe loader.

VERSATILITY AND ATTACHMENTS.

YOU CAN MAKE THE MOST EFFICIENT USE OF YOUR TIME AND MONEY WITH A JCB LOADALL. IT'S A HIGHLY VERSATILE MACHINE SUITABLE TO CARRY A WIDE RANGE OF ATTACHMENTS, SO YOU WON'T NEED TO HIRE EXTRA EQUIPMENT LIKE CRANES, LOADING SHOVELS, FORK LIFT TRUCKS OR AERIAL WORK PLATFORMS. IN FACT, A LOADALL IS OFTEN THE ONLY MACHINE YOU NEED ON SITE.

An attachment for every job.

Fitted with a JCB Q-Fit carriage, the JCB Loadall lets you fit a number of attachments for maximum versatility and productivity.

General Purpose Shovel.

1 Re-handle loose material like sand, gravel, soil and building waste with great efficiency (teeth or toe plate can be bolted on).

Heavy Duty Forks.

2 Ideal for handling palletised loads, boxed fruit, veg crop and IBC's.

Man Platform.

3 Transform your Loadall into an aerial work platform on construction sites and in elevated working situations.

Grain Bucket.

4 The round edges of this large bucket are designed to prevent damage to grain and root crop materials.

Crane Hook (fork-mounted).

5 Move suspended loads quicker and safer than ever with a Crane Hook mounted on Loadall forks. Alternatively, use the specially designed lifting hole in the carriage with a shackle

Power Grab.

6 Designed for handling loose materials, this attachment is ideal for handling muck, brash and crops such as bamboo and sugar cane.

Bucket with Grab.

7 Perfect for handling loose bulk material, such as solid waste, scrap metal, recycling and other bulk materials and feed etc.

Shear Grab.

8 Designed to cleanly cut grass and maize silage from the clamp.



The JCB Loadall's natural versatility – combined with our huge attachments range – means it can do the job of many different machines.



PRODUCTIVITY AND EFFICIENCY.

JCB LOADALLS ARE DESIGNED TO MAKE THE MOST OF EVERY DROP OF FUEL. BLESSED WITH GREAT LIFTING PERFORMANCE, SUPERIOR TRACTION ON ALL TERRAINS, AND TREMENDOUS VERSATILITY, THESE MACHINES WILL GET THE JOB DONE ON ANY SITE.

A true multi-purpose machine.

1 Loadalls are highly manoeuvrable machines that you can easily operate in confined spaces. Rear wheel steering and a compact wheelbase make for a turning radius of as little as 4.85m or use the independant brake pedals for even tighter turning.

2 You can switch between two and four-wheel-drive as standard, providing the right level of traction on any terrain. This makes a Loadall well suited to any industry, including agriculture.

3 Standard auxiliary pipework on the boom nose means you can use a wide variety of attachments like grabs.

4 With stabilisers, our 530-110 Loadall can lift a maximum payload of three tonnes all the way to its full lift height of 11m.

A reversing fan clears dust and debris from the cooling system, maintaining performance at all times.





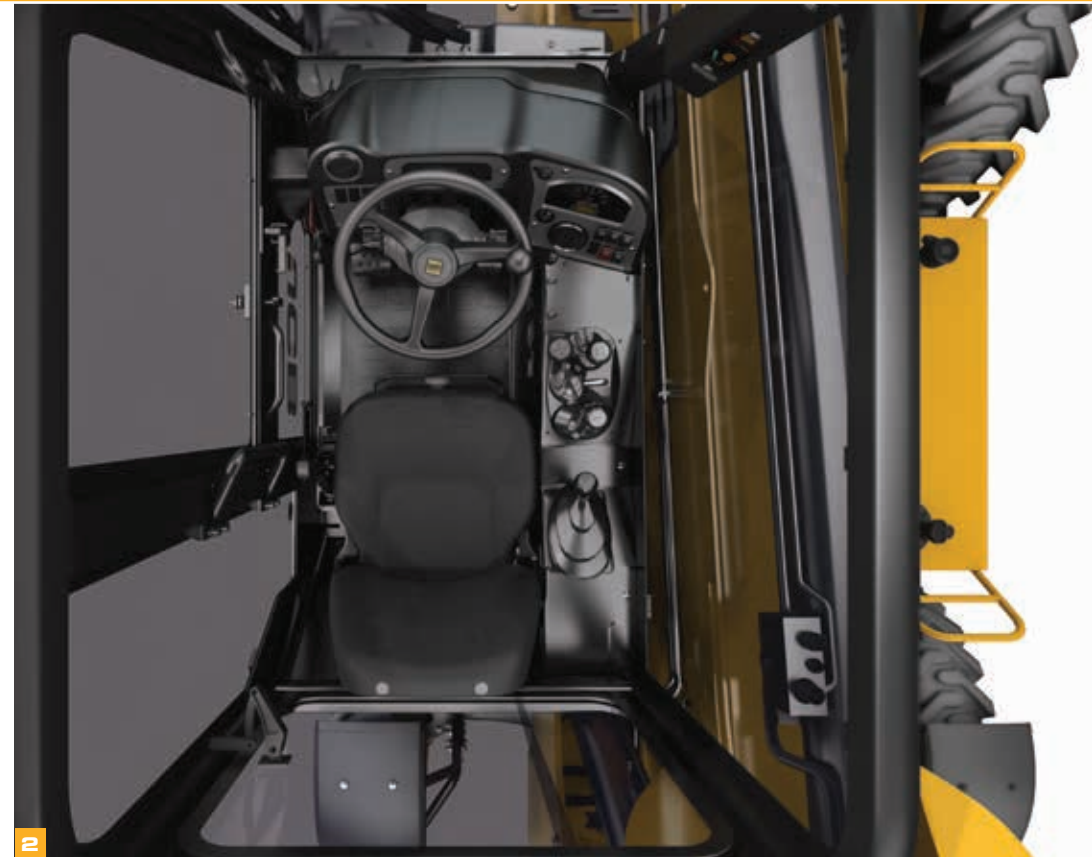
A JCB Loadall's superior forward reach adds another dimension; you can work beyond objects and reach far to unload trucks and containers.

COMFORT AND EASE OF USE.

WE UNDERSTAND THAT PRODUCTIVITY IS YOUR NUMBER ONE PRIORITY. THAT'S WHY WE MAKE THESE MACHINES AS COMFORTABLE AND EASY TO USE AS POSSIBLE. AFTER ALL, A FRESH AND ALERT OPERATOR IS A MORE PRODUCTIVE ONE.

All-day comfort.

- 1** The spacious cab provides a well ventilated environment, with a split door, twin fan and rear window for all-day comfort.
- 2** We fit a comfortable, ergonomic operator seat, tinted glass and sun blinds as standard.
- 3** To make your Loadall as easy to operate as possible, forward and reverse controls are located on the steering column.
- 4** Transmission dump on the joystick provides simplifies loading or rehandling.



The control levers are smooth, light, responsive and ergonomic, making it easier for you to rehandle materials as well as placing loads at reach or height.



SAFETY AND SECURITY.

ON-SITE SAFETY IS OF PARAMOUNT IMPORTANCE, THEREFORE JCB LOADALLS HAVE A WEALTH OF FEATURES DESIGNED TO PROTECT THE MACHINE, THE OPERATOR AND ANY BYSTANDERS.

Protecting your most valuable assets.

1 The cab is Roll Over Protection System (ROPS) and Falling Objects Protection System (FOPS) certified, so operators are safe at all times. A large easy-to-view inclinometer shows your machine angle.

2 When a Loadall's stabilisers are deployed, (530-110 only) the machine can't be driven, improving site safety still further. Work and road lights, as well as dome mirrors offer ultimate visibility day or night.

3 We've fitted Hose Burst Check Valves (HBCVs) as standard; these safety components prevent ram collapse in the event of pressure loss.

Your JCB ignition key opens everything: the cab door, engine bonnet, toolbox, battery compartment and under seat box.





If a load exceeds your Loadall's limits, you're still protected. Our built-in Load Moment Indicator (LMI) displays loads through the range and warns operators of overload via visual and audio warnings.

SERVICE.

TO MAKE THE MOST OF YOUR INVESTMENT, YOU NEED MACHINERY TO SPEND ITS TIME WORKING, NOT BEING WORKED ON. THAT'S WHY JCB LOADALLS HAVE LONG SERVICE INTERVALS AND, WHEN MAINTENANCE DOES NEED TO BE CARRIED OUT, IT'S A STRAIGHTFORWARD TASK.

Service simplicity.

1 All daily checks, greasing points and serviceable components can be accessed from ground level. Important filters (engine oil, hydraulic oil and fuel) are centrally located to make servicing fast and easy.

2 JCB Loadalls have long service intervals, ensuring that they spend as much time working hard for you as possible. Because these machines use many of the same parts as our backhoe loaders, you'll find them easy and quick to service when maintenance is required.



LIVELINK, WORK SMARTER.

LIVELINK IS AN INNOVATIVE SOFTWARE SYSTEM THAT LETS YOU MANAGE JCB MACHINES REMOTELY – ONLINE, BY EMAIL OR BY MOBILE PHONE. ACCESS EVERYTHING FROM MACHINE ALERTS TO REAL-TIME LOCATION AND DIAGNOSTICS INFORMATION, WITH ALL DATA STORED AT A SECURE CENTRE.



Maintenance benefits

Manage machine maintenance easily – accurate hours monitoring and service alerts improve maintenance planning, while real-time location data helps you manage your fleet. Critical machine alerts and maintenance history records are also available.



Security benefits

LiveLink helps to keep your machines safe and improves control over machine misuse. Real-time location finder allows you to keep track of your machines wherever you are in the world.



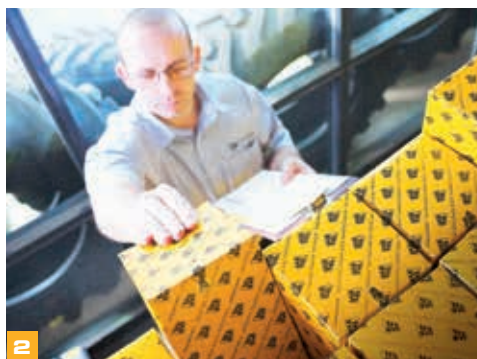
VALUE ADDED.

JCB'S WORLDWIDE CUSTOMER SUPPORT IS FIRST CLASS. WHATEVER YOU NEED AND WHEREVER YOU ARE, WE'LL BE AVAILABLE QUICKLY AND EFFICIENTLY TO HELP MAKE SURE YOUR MACHINERY IS PERFORMING TO ITS FULL POTENTIAL.

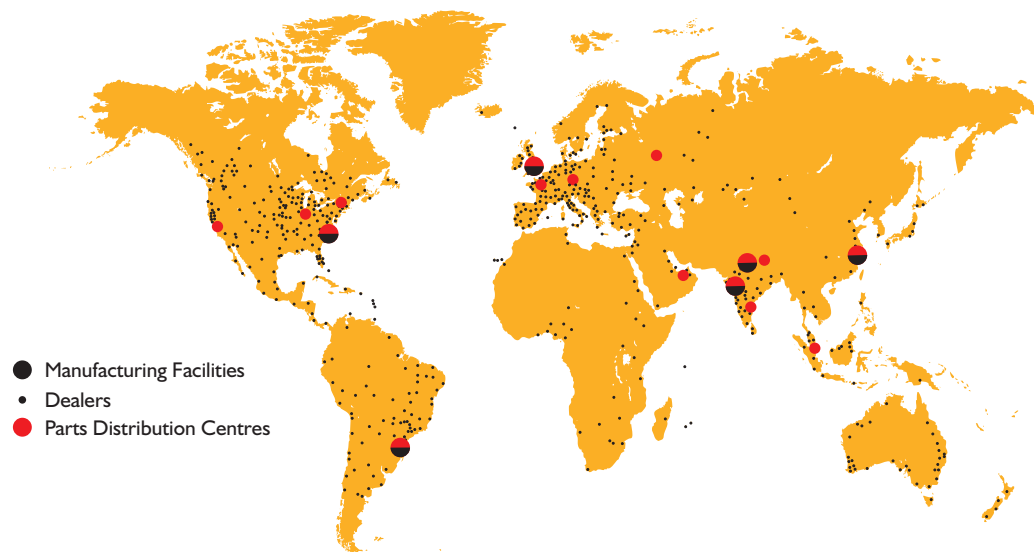


1 Our Technical Support Service provides instant access to factory expertise, day or night, while our Finance and Insurance teams are always on hand to provide fast, flexible, competitive quotes.

2 The global network of JCB Parts Centres is another model of efficiency; with 16 regional bases, we can deliver around 95% of all parts anywhere in the world within 24 hours. Our genuine JCB parts are designed to work in perfect harmony with your machine for optimum performance and productivity.

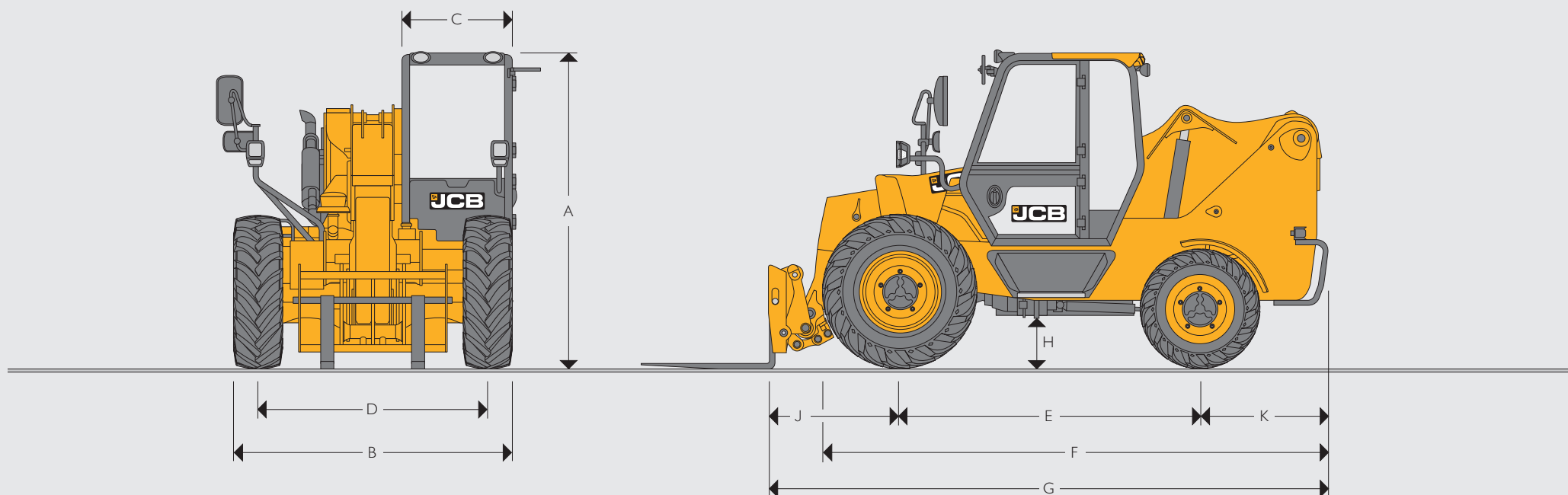


3 JCB Assetcare offers comprehensive extended warranties and service agreements, as well as service-only or repair and maintenance contracts. Irrespective of what you opt for, our maintenance teams around the world charge competitive labour rates, and offer non-obligation quotations as well as fast, efficient insurance repair work.



- Manufacturing Facilities
- Dealers
- Parts Distribution Centres

STATIC DIMENSIONS



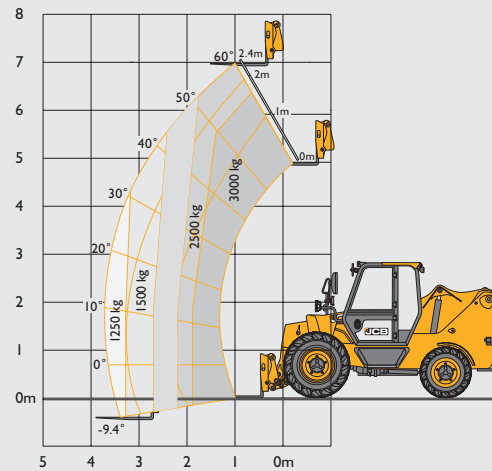
STATIC DIMENSIONS

Machine model			530-70	530-110
A	Overall height	m (ft-in)	2.67 (8-9)	2.67 (8-9)
B	Overall width (over tyres)*	m (ft-in)	2.32 (7-7)	2.32 (7-7)
C	Inside width of cab	m (ft-in)	0.79 (2-7)	0.79 (2-7)
D	Front track	m (ft-in)	1.98 (6-6)	1.98 (6-6)
E	Wheelbase	m (ft-in)	2.49 (8-2)	2.49 (8-2)
F	Overall length to front tyres	m (ft-in)	4.19 (13-9)	4.19 (13-9)
G	Overall length to front carriage	m (ft-in)	4.66 (15-3)	5.30 (17-4)
H	Ground clearance	m (ft-in)	0.40 (1-4)	0.40 (1-4)
J	Front wheel centre to carriage	m (ft-in)	1.10 (3-7)	1.73 (5-8)
K	Rear wheel centre to rear face	m (ft-in)	1.07 (3-6)	1.07 (3-6)
	Outside turn radius (over tyres)	m (ft-in)	4.85 (15-11)	4.85 (15-11)
	Operating weight (with GP shovel)	kg (lb)	7260 (16005)	-
	Operating weight (with forks)	kg (lb)	-	8870 (1955)

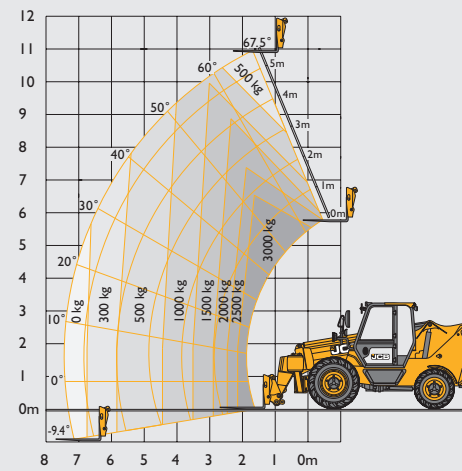
* Type dependent

LIFT PERFORMANCE

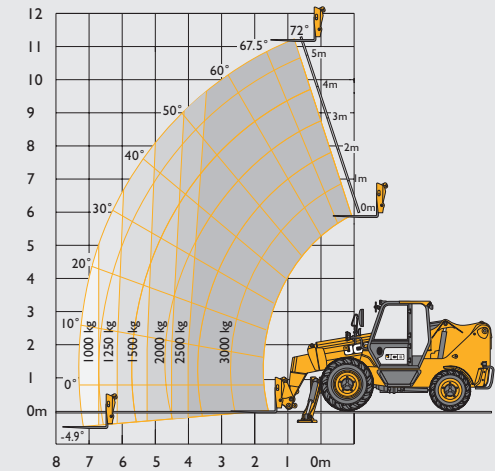
530-70



530-110 (stabilisers retracted)



530-110 (stabilisers extended)



Maximum lift capacity	kg (lb)	3000 (6613)	3000 (6613)	3000 (6613)
Lift capacity to full height	kg (lb)	2500 (5512)	500 (1102)	3000 (6613)
Lift capacity at full reach	kg (lb)	1250 (2756)	0 (0)	1000 (2203)
Lift height	m (ft-in)	7 (23)	10.95 (35.9)	11.23 (36.84)
Reach at maximum lift height	m (ft-in)	1 (3.2)	1.69 (5.5)	1.87 (6.1)
Maximum forward reach	m (ft-in)	3.67 (12.04)	7.44 (24.4)	7.3 (24)
Reach with 1 tonne load	m (ft-in)	3.67 (12.04)	4.8 (15.7)	7.3 (24)
Maximum placing height	m (ft-in)	6.3 (20-8)	10.5 (34.5)	10.5 (34.5)
Maximum dump height	m (ft-in)	5.8 (19-0)	10.5 (34.5)	10.5 (34.5)

ENGINE		
Manufacturer		JCB DieselMAX 448
Displacement	litres	4.8
No of cylinders		4
Aspiration		Naturally aspirated
Gross power @ 2200rpm	kW (hp)	56 (76)
Max. torque @ 1100rpm	Nm (kgm)	310 (31.6)
Reversible cooling fan (1 cycle at 20 mins interval). Pre-cleaner (Turbo III). Spark arrestor in exhaust system.		
Emissions level		Bharat Stage III

TRANSMISSION	
JCB Synchro Shuttle with torque converter (ratio 3.01:1). 4 speed. Maximum travel speed 30kph. Selectable 2/4 Wheel Drive disconnect. Transmission disconnect button (on hydraulic levers). Forwards/neutral/reverse shuttle (steering column mounted).	
Front and rear drive axles: JCB MaxTrack torque proportioning differential.	
Front: JCB Drive axle - rigid mounted.	
Rear: JCB Steer and Drive axle - centrally pivoted with oscillating of 16 degrees.	

STEERING	
Hydraulically powered rear wheel steer.	
Turning radius: 4.85 metres. Maximum steering angle: +/- 48 degrees.	

BRAKES	
Service brakes: Hydraulically actuated, self adjusting, in-board, oil-immersed, multi-disc type in the front axle. Splittable pedals for independent braking.	
Parking brake: Hand operated disc brake, on output of gearbox.	

WHEELS & TYRES	
Front: BKT Grip Star (15.5/80-24) / (400/80 R24). Traction pattern. 15 Ply rating. Tubeless.	
Rear: JCB branded - BKT AT 621 (12.5/80-18). Industrial pattern. 12 Ply rating. Tubeless.	

HYDRAULICS		
Operating system pressure	bar	245
Main hydraulics	l/min	100
Pump	l/min	2 section gear pump.
Loader controls	530-70: Mechanical lever - Loading Pattern 530-110: Mechanical lever - Placing Pattern	
Hydraulic cycle times		seconds
	530-70	530-110
Boom raise	9	12.45
Boom lower	6.21	11.9
Extend	5.54	16.21
Retract	5.84	22.34
Bucket dump	2.1	2.13
Bucket crowd	2.7	2.57

External sight gauge. Single auxiliary at boom nose with quick release couplings.

ELECTRICAL SYSTEM		
System	Volt	12
Alternator output	Amp hour	130
Full road lighting. Front and rear cab-mounted work lights. Removable battery isolator key.		

SERVICE CAPACITIES		
Fuel tank	litres	110
Hydraulic tank	litres	130
Engine coolant	litres	16.5
Engine oil	litres	14.2
Transmission oil	litres	16
Front axle oil	litres	21
Rear axle oil	litres	11

CAB	
Fully glazed cabin with standard trim. Vinyl adjustable seat with seat belt. Split stable door. Sun blinds - front screen and roof window. Face level fans. 12 Volt charge socket.	
ROPS (Roll Over Protection System) conforms to ISO 3471. FOPS (Falling Object Protection System) conforms to ISO 344.	

INSTRUMENTS	
Engine speed. Engine hours. Fuel level. Water temperature. Load Moment Indicator (LMI). Inclinator.	

OTHER	
Lockable toolbox under seat and under cab. Fire extinguisher. Road lighting with adjustable rear light arms. Recovery hitch.	

LIVELINK	
JCB LiveLink is an advanced telematics system enabling you to monitor and manage your machines remotely with information provided on: machine hours, location positioning and movement, routine maintenance information, diagnostic alerts and service warnings.	

CARRIAGE	
JCB Loadall Q-fit with integrated floating forks on bar.	

ATTACHMENTS	
530-70: Floating forks and bar, Q-fit mounted. Crane hook (fork mounted). 1.2m³ General Purpose shovel (2375mm wide) with bolt on teeth.	
530-110: Floating forks and bar, Q-fit mounted. Crane hook (fork mounted). 0.9m³ General Purpose shovel (2375mm wide) with bolt on teeth.	



ONE COMPANY, OVER 300 MACHINES.

Your nearest JCB dealer

JCB LOADALL 530-70/530-110

Gross power: 56kW (75hp) Lift capacity: 3000kg Lift height: 7m – 11m

JCB Sales Limited, Rocester, Staffordshire, United Kingdom ST14 5JP

Tel: +44 (0)1889 590312 Email: salesinfo@jcb.com

Download the very latest information on this product range at: www.jcb.com

©2009 JCB Sales. All rights reserved. No part of this publication may be reproduced, stored in a retrieval system, or transmitted in any form or by any other means, electronic, mechanical, photocopying or otherwise, without prior permission from JCB Sales. All references in this publication to operating weights, sizes, capacities and other performance measurements are provided for guidance only and may vary dependant upon the exact specification of machine. They should not therefore be relied upon in relation to suitability for a particular application. Guidance and advice should always be sought from your JCB Dealer. JCB reserves the right to change specifications without notice. Illustrations and specifications shown may include optional equipment and accessories. All images are correct at time of print. The JCB logo is a registered trademark of J C Bamford Excavators Ltd.

